

NORTHLAND

REAL ESTATE, INC.

Commercial & Industrial Real Estate

Industrial Office for Lease

460 N. Danebo Ave, Eugene, OR 97402

- **Approx 10,620 sf office;**
5,760 sf +/- first floor
4,860 sf +/- second floor
- **Quality finished space**
- **Three Restrooms**
- **Multiple Private offices**
- **Two Conference Rooms**
- **Large open work spaces**
- **Ample parking**
- **Interior & exterior stair cases**
- **Lunchroom/breakroom**
- **Outside patio/break area**
- **Easy Access to Beltline & I-5**
- **\$0.45 psf gross**
Includes water, tenant pays utilities



Contact:

Vince Schultz, GRI

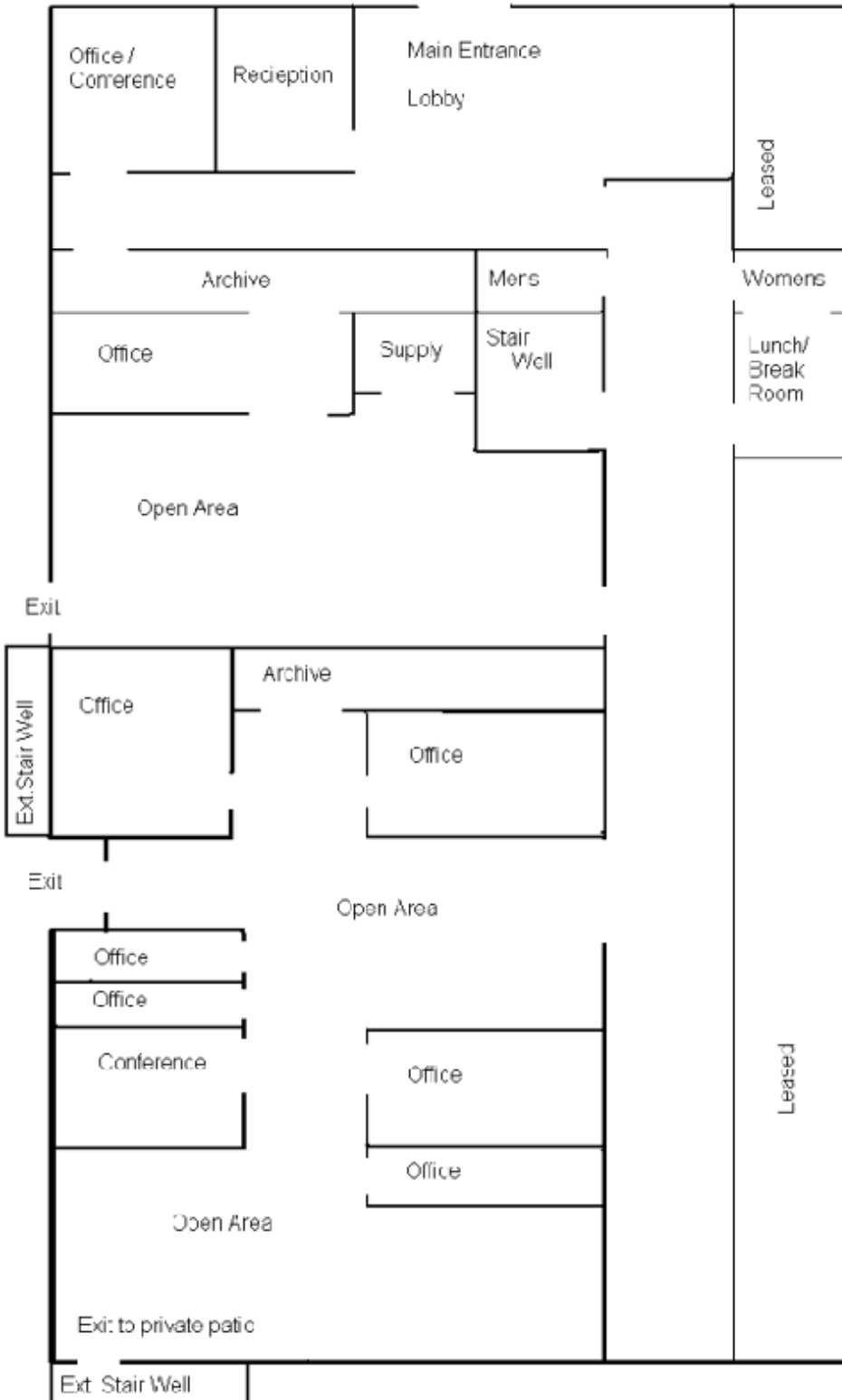
Licensed Real Estate Broker in the
State of Oregon

541.345.2361

yinces@northlandre.com

4/28/11

First Floor (not to scale)



Second Floor (not to scale)

